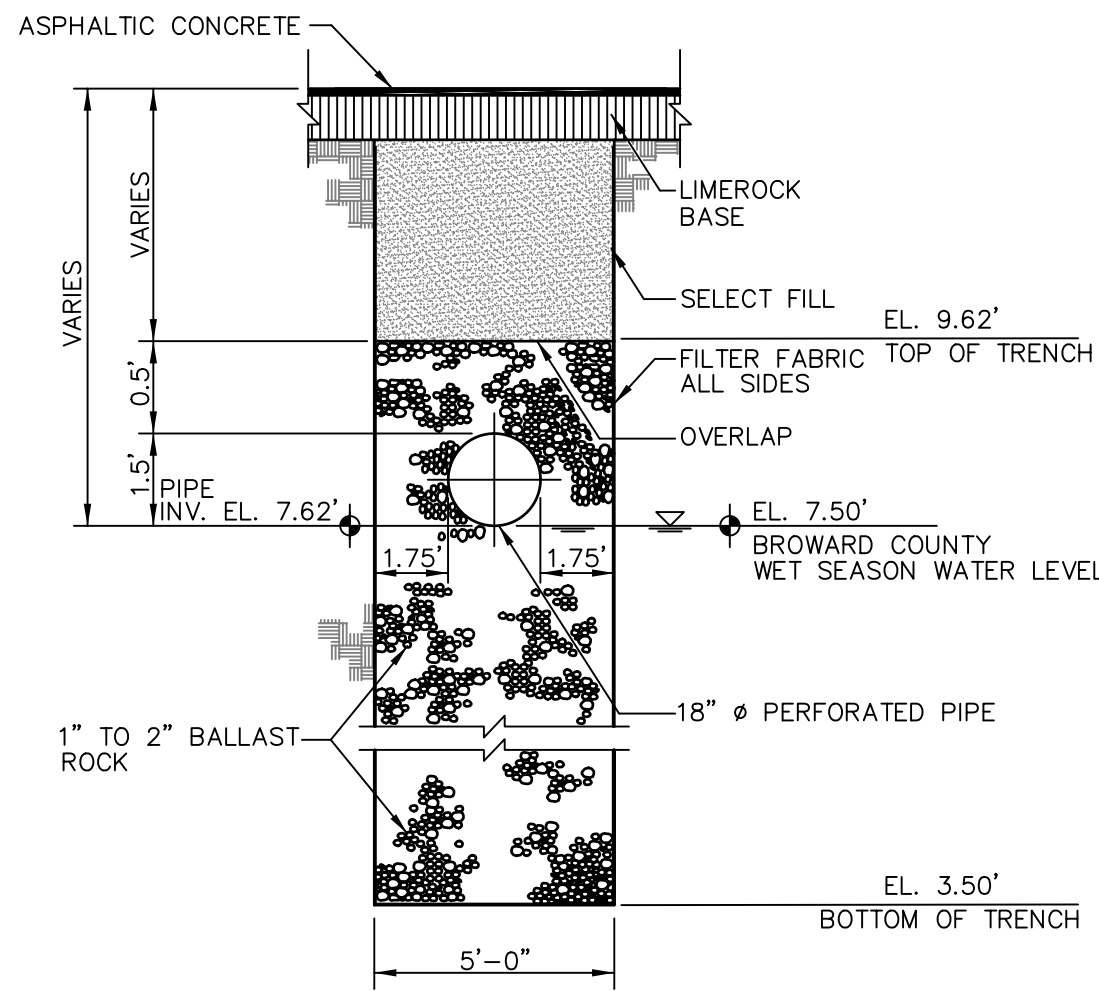
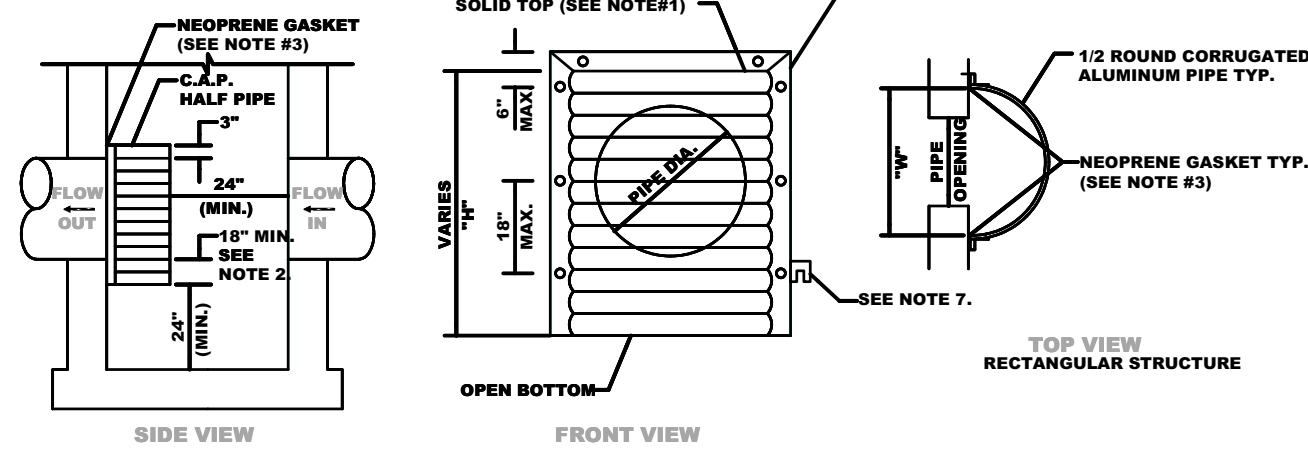


- NOTES:
1. PROVIDE BAFFLE WHEREVER PIPE ENTERS FRENCH DRAIN.
  2. BAFFLE SHALL BE AS SHOWN ON DETAIL IN THIS SHEET OR APPROVED EQUAL.
  3. SUMP 2'-0" (TYP.) EXCEPT AT POLLUTION CONTROL STRUCTURES SUMP TO BE 3'-6".

**EXFILTRATION TRENCH  
CONNECTION DETAIL**  
N.T.S.



NOTE: FILTER FABRIC PER FDOT INDEX NO. 199  
**18" EXFILTRATION TRENCH SECTION**  
N.T.S.

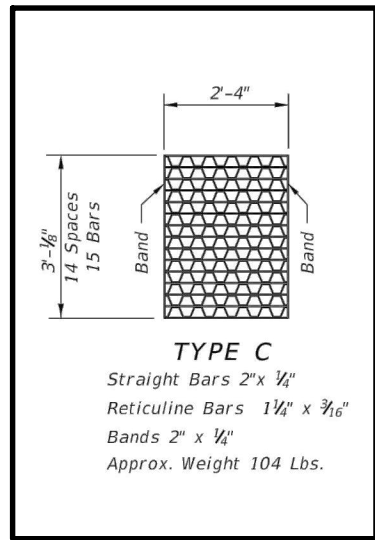
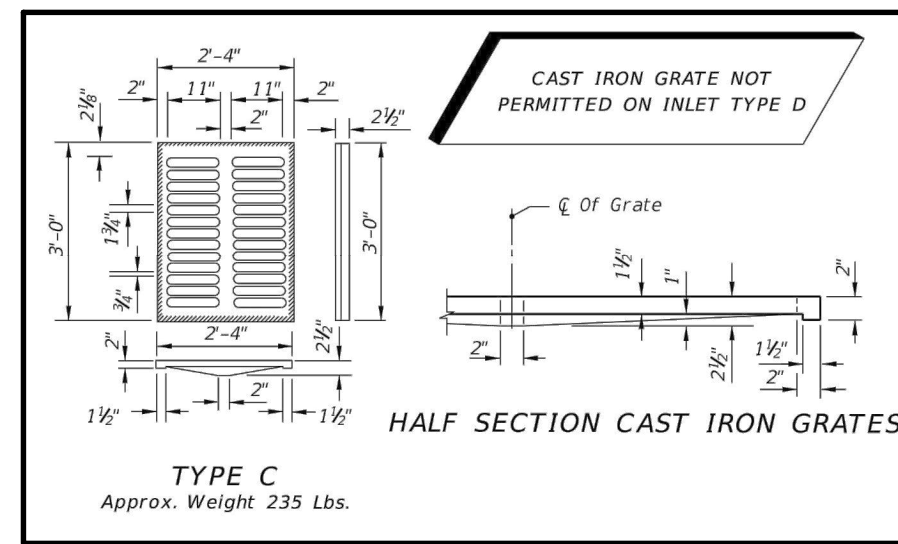


PIPE DIA.	W <sup>3</sup> (IN)	W <sup>2</sup> (IN)	T (GAUGE)	H (IN)
15"	21"	21"	16	VARIES
18"	24"	24"	16	VARIES
21"	30"	30"	16	VARIES
24"	36"	36"	16	VARIES
30"	36"	42"	14	VARIES
36"	42"	48"	14	VARIES
42"	48"	54"	14	VARIES
48"	54"	60"	14	VARIES
54"	60"	66"	14	VARIES

1. RECTANGULAR STRUCTURE  
2. ROUND STRUCTURE

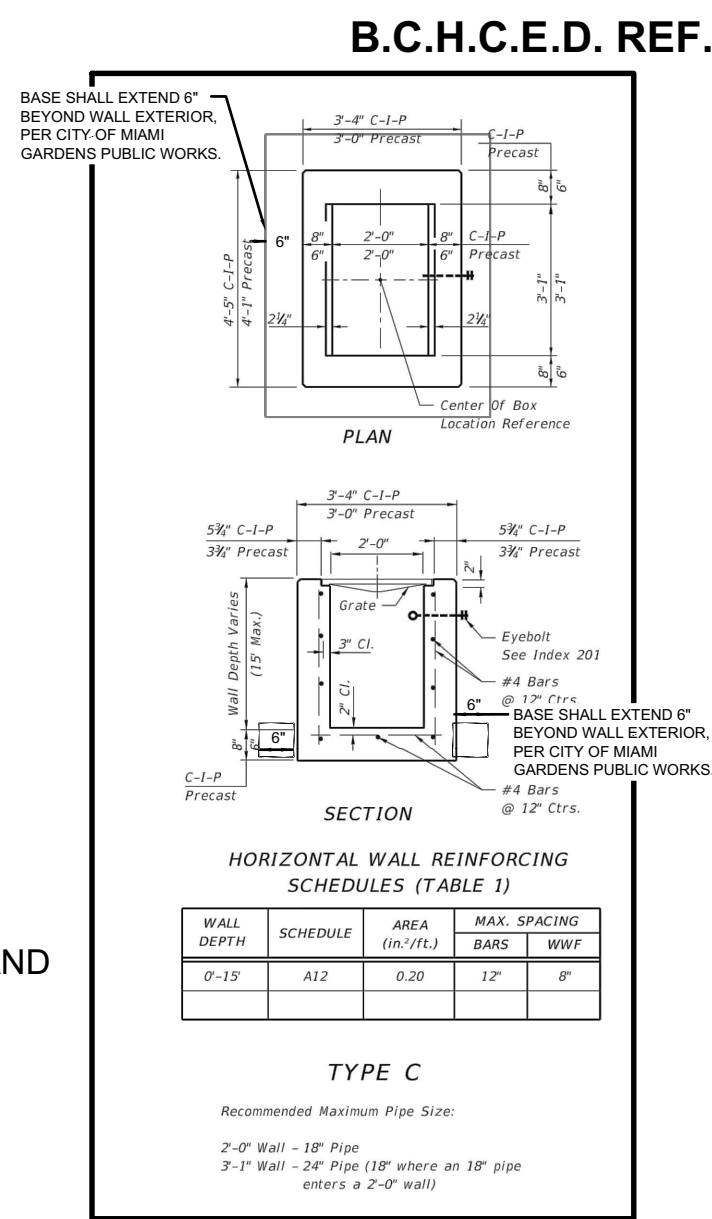
- NOTES
1. ALUMINUM SHEET OF SAME THICKNESS (GAUGE) AS PIPE SHALL BE WELDED TO CLOSE OPENING AT THE TOP.
  2. THE BOTTOM ELEVATION OF THE POLLUTION RETARDANT BAFFLE MUST BE AT LEAST 1.5' BELOW CONTROL ELEVATION.
  3. NEOPRENE ADHESIVE BACKED GASKET, OR APPROVED EQUAL (1"x2") SHALL BE INSTALLED ON THE SIDES AND TOP ALL.
  4. IMBELLURON RETARDANT BAFFLE TO BE FASTENED IN PLACE WITH 3/4" STAINLESS STEEL "RED HEADS", OR APPROVED.
  5. REBARRIMENT BRACKETS MAY BE ADDED TO FLAT BARS TO EASE INSTALLATION IN ROUND STRUCTURES. SPACING TO MATCH HOLES IN FLAT BARS.

**POLLUTION RETARDANT BAFFLE DETAIL**  
N.T.S.



NOTE:  
SEE FDOT INDEX 232 FOR COMPLETE DETAIL, NOTES AND SPECIFICATIONS.

**FDOT TYPE C INLET**  
N.T.S.



**Christoph  
er Collins**  
Digitally signed by  
Christopher Collins  
Date: 2022.07.14  
12:30:33 -05'00'

**ELEVATIONS NOTE:**

ELEVATIONS ARE RELATIVE TO THE NORTH AMERICAN VERTICAL DATUM OF 1988 (NAVD88) AND ARE BASED ON THE BROWARD COUNTY BENCHMARK #2602752C.  
REFER TO BOUNDARY AND TOPOGRAPHIC SURVEY CONDUCTED BY MILLER LEGG.

**PERMIT SET**  
MUST BE ON JOBSITE AT ALL TIMES DURING CONSTRUCTION

**NOTICE**  
INSPECTION REQUIRED  
24 HRS. PRIOR TO COMMENCING ANY WORK IN THE PUBLIC ROW CONTACT THE BROWARD COUNTY HIGHWAY CONSTRUCTION AND ENGINEERING DIVISION AT 954-577-4600 FOR INSPECTION.

**NOTE:**  
APPROVAL OF THIS PLAN DOES NOT CONSTITUTE A PERMIT FOR CONSTRUCTION.  
A PERMIT FOR CONSTRUCTION MUST BE OBTAINED FROM THE BROWARD COUNTY HIGHWAY CONSTRUCTION AND ENGINEERING DIVISION PRIOR TO COMMENCING CONSTRUCTION IN THE PUBLIC RIGHT OF WAY.  
ALL MATERIALS USED AND INSTALLATIONS WITHIN THE PUBLIC RIGHT OF WAY OR EASEMENTS SHALL BE IN ACCORDANCE WITH BROWARD COUNTY HIGHWAY CONSTRUCTION AND ENGINEERING DIVISION SPECIFICATIONS.

BROWARD COUNTY HIGHWAY CONSTRUCTION AND ENGINEERING DIVISION

☐ PLAN CONSISTENT WITH PLAT REQUIREMENTS  
☐ PUBLIC RIGHT OF WAY APPROVAL FOR PAVING, GRADING AND DRAINAGE

BY: \_\_\_\_\_ DATE: \_\_\_\_\_  
DOES NOT INCLUDE APPROVAL OF PAVEMENT MARKING & SIGNS

Revision	Date
Comment	
Revision	Date
Comment	
Revision	Date
Comment	
Revision	Date
Comment	
Revision	Date
Comment	
Revision	Date
Comment	
Designed by:	C.P.C.
Drawn by:	A.T.S.
Checked by:	C.P.C.
Approved by:	C.P.C.
Scale:	N.T.S.
Date:	05/25/2022
Job No.:	1002

Plans for  
**FESTIVAL  
MARKETPLACE**  
2900 W SAMPLE ROAD  
POMPANO BEACH,  
FLORIDA

**GRADING &  
DRAINAGE  
DETAILS**

**Sunshine**  
Call 811 or visit [www.floridaclear.com](http://www.floridaclear.com) two full business days before digging to locate buried facilities located within the project area.  
Check positive response to 811 call.

She No.

699

**DRC**  
PZ22-12000027  
10/5/2022

**DRC**  
PZ22-12000027  
8/17/2022